

Condominio "L'Anciuè"

piazza Roma 1,2
14100 Asti (AT)

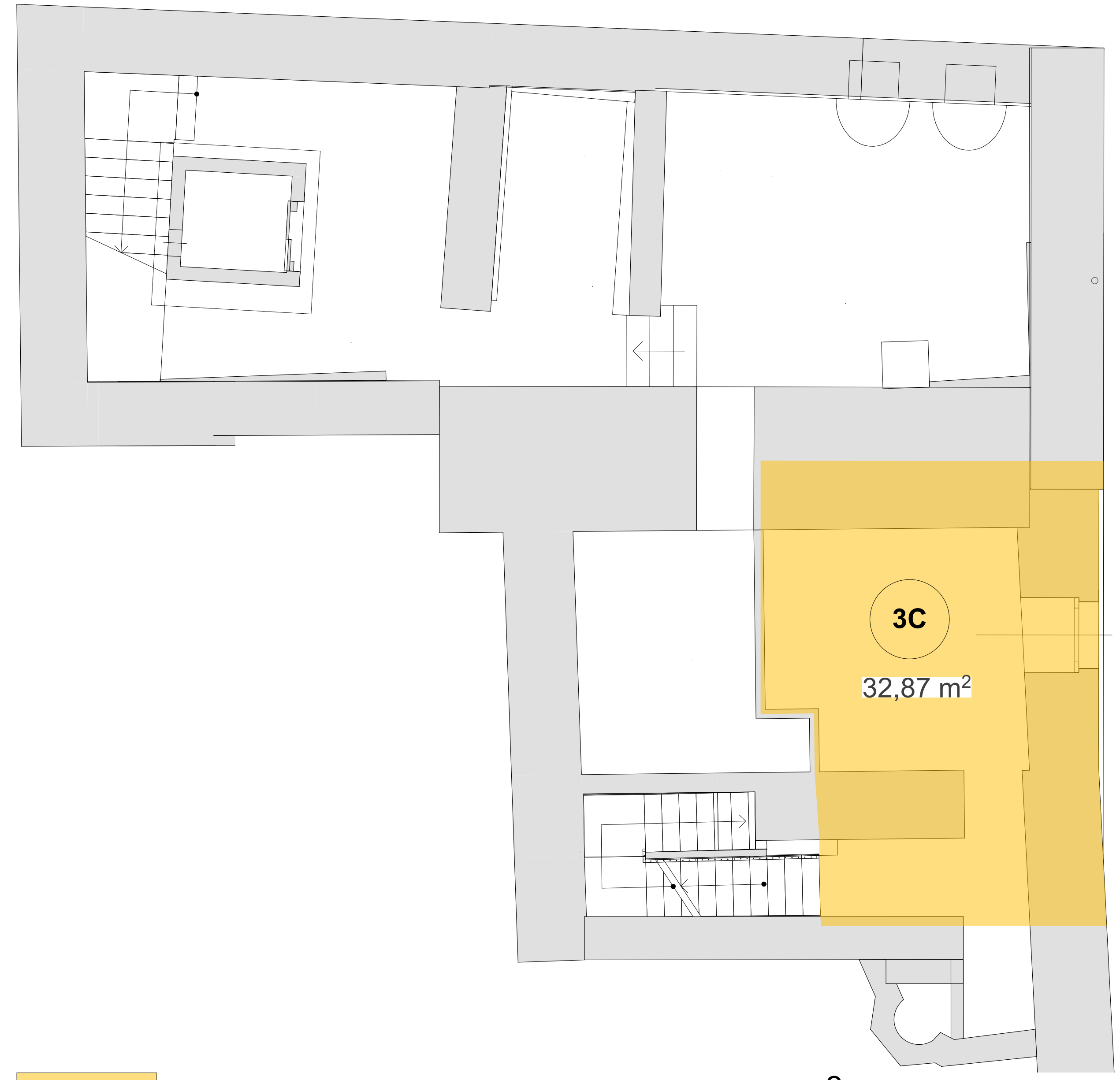
SUPERFICI COMMERCIALI

Piano -1	1C	130,01 m ²
	2C	66,47 m ²
	3C	88,85 m ²
Piano Terra	4C	127,56 m ²
	1R	125,30 m ²
Piano Primo	2R	125,15 m ²
	3R	129,13 m ²
Piano Secondo	4R	126,98 m ²
Piano Terzo	5R	103,87 m ²

TOTALE sup. commerciali
1.023,31 m²



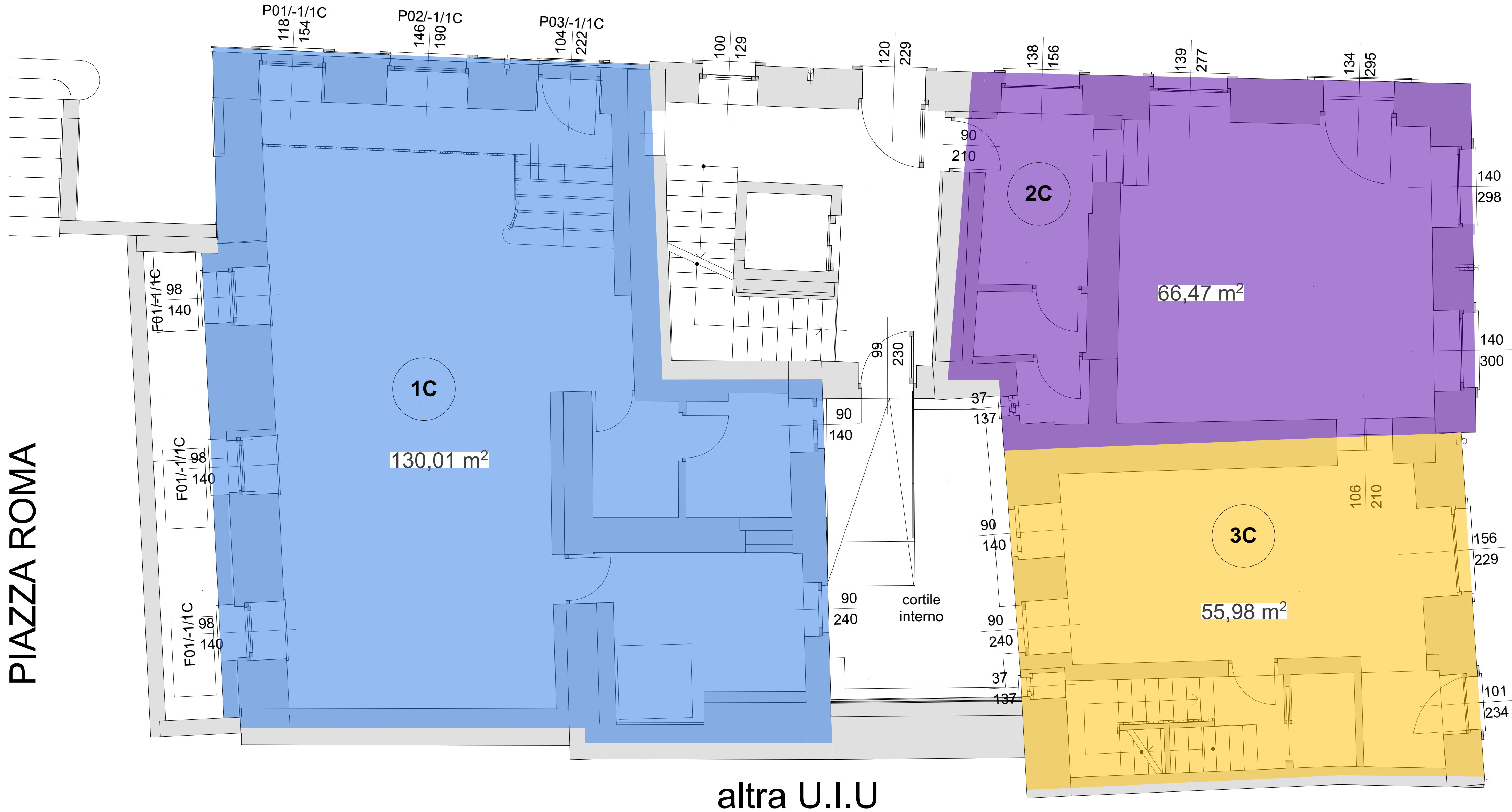
VIA OTTOLENGHI



VIA ALIBERTI

 3C - sup. commerciale 32,87 m²

VIA OTTOLENGHI



PIAZZA ROMA

VIA ALIBERTI

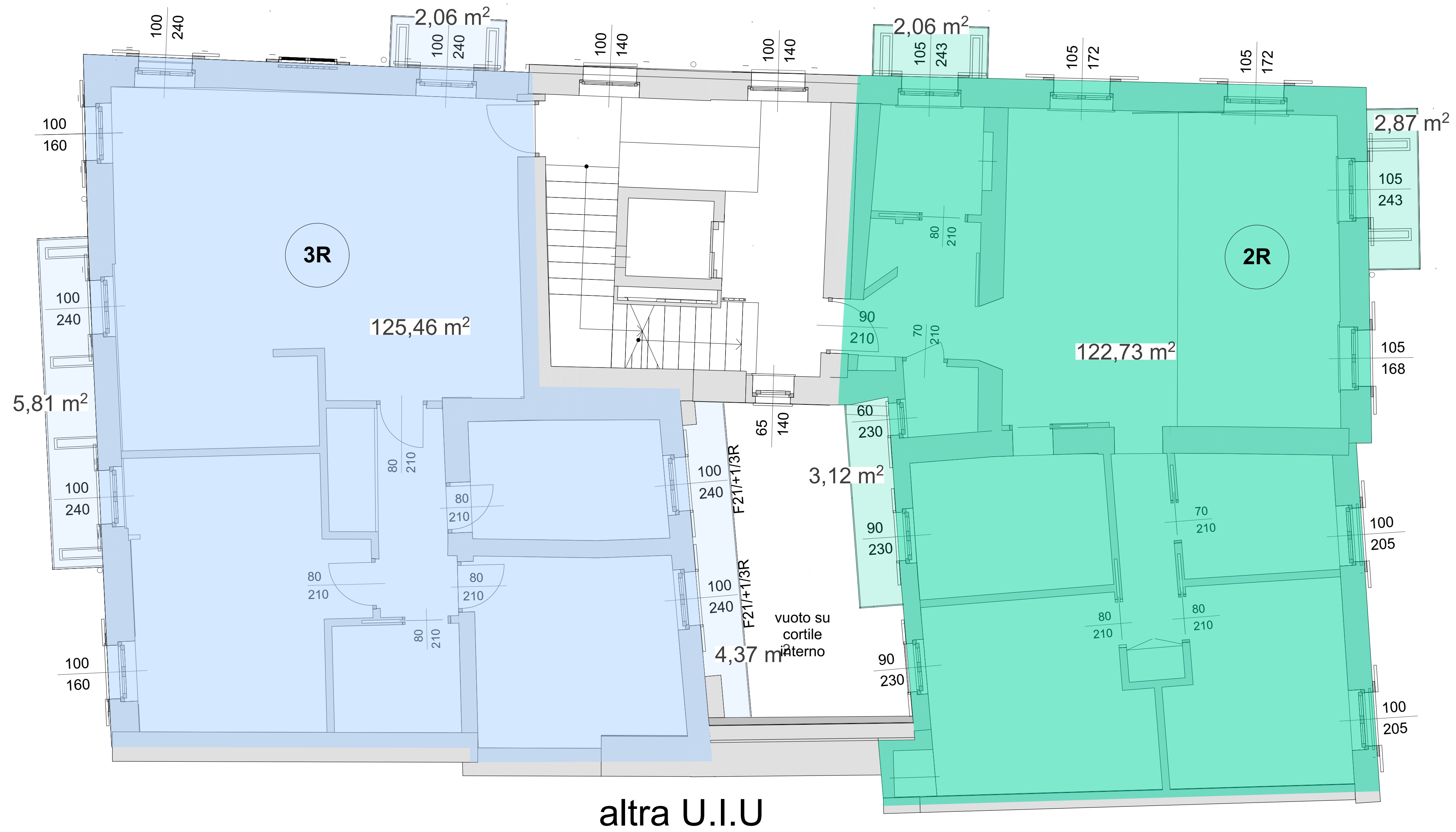
altra U.I.U

- 1C - sup. commerciale 130,01 m²
- 2C - sup. commerciale 66,47 m²
- 3C - sup. commerciale 55,98 m²

VIA OTTOLENGHI

PIAZZA ROMA

VIA ALIBERTI

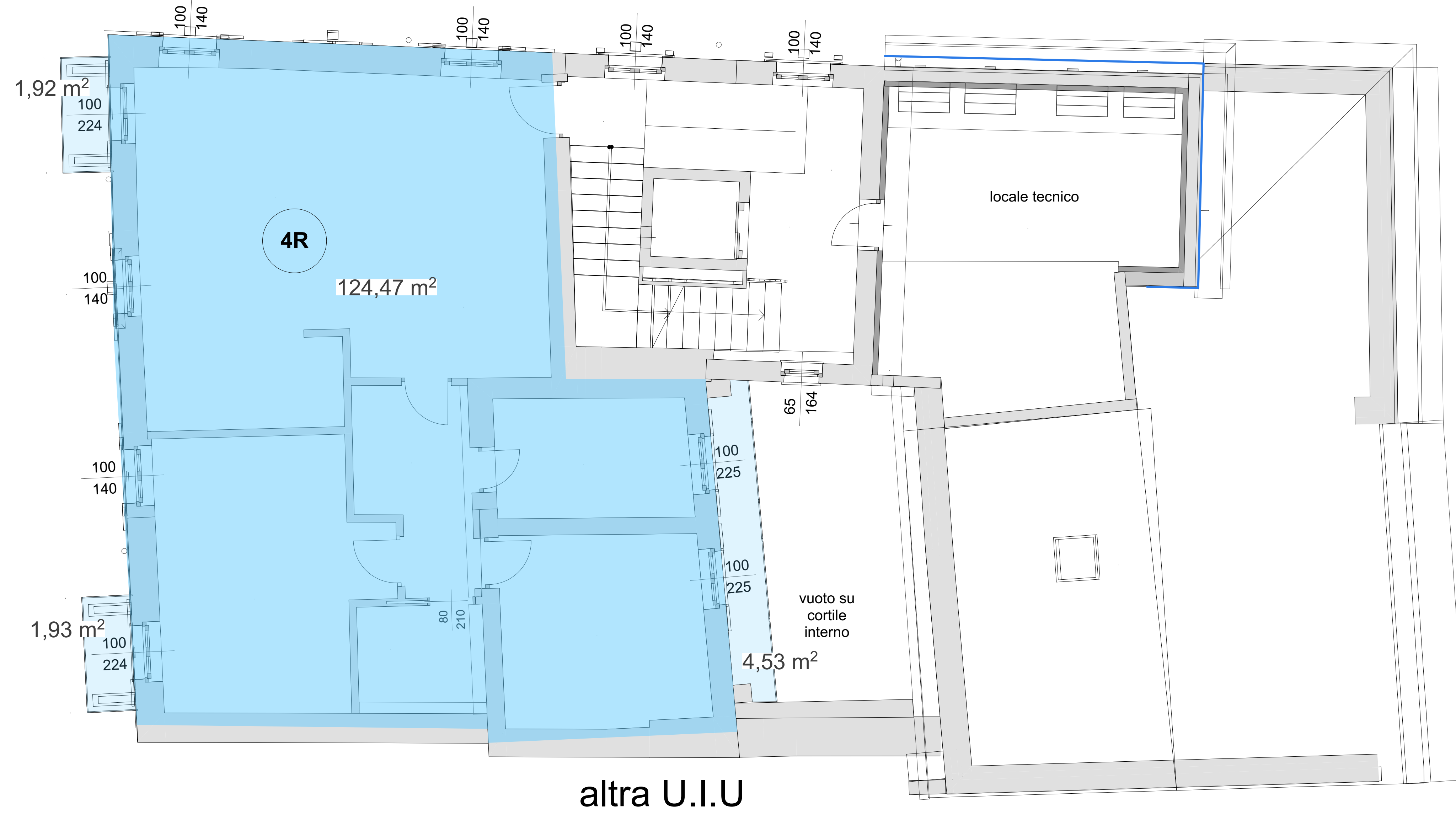


- 2R - sup. commerciale 125,14 m²
- 3R - sup. commerciale 129,13 m²

VIA OTTOLENGHI

PIAZZA ROMA

VIA ALIBERTI

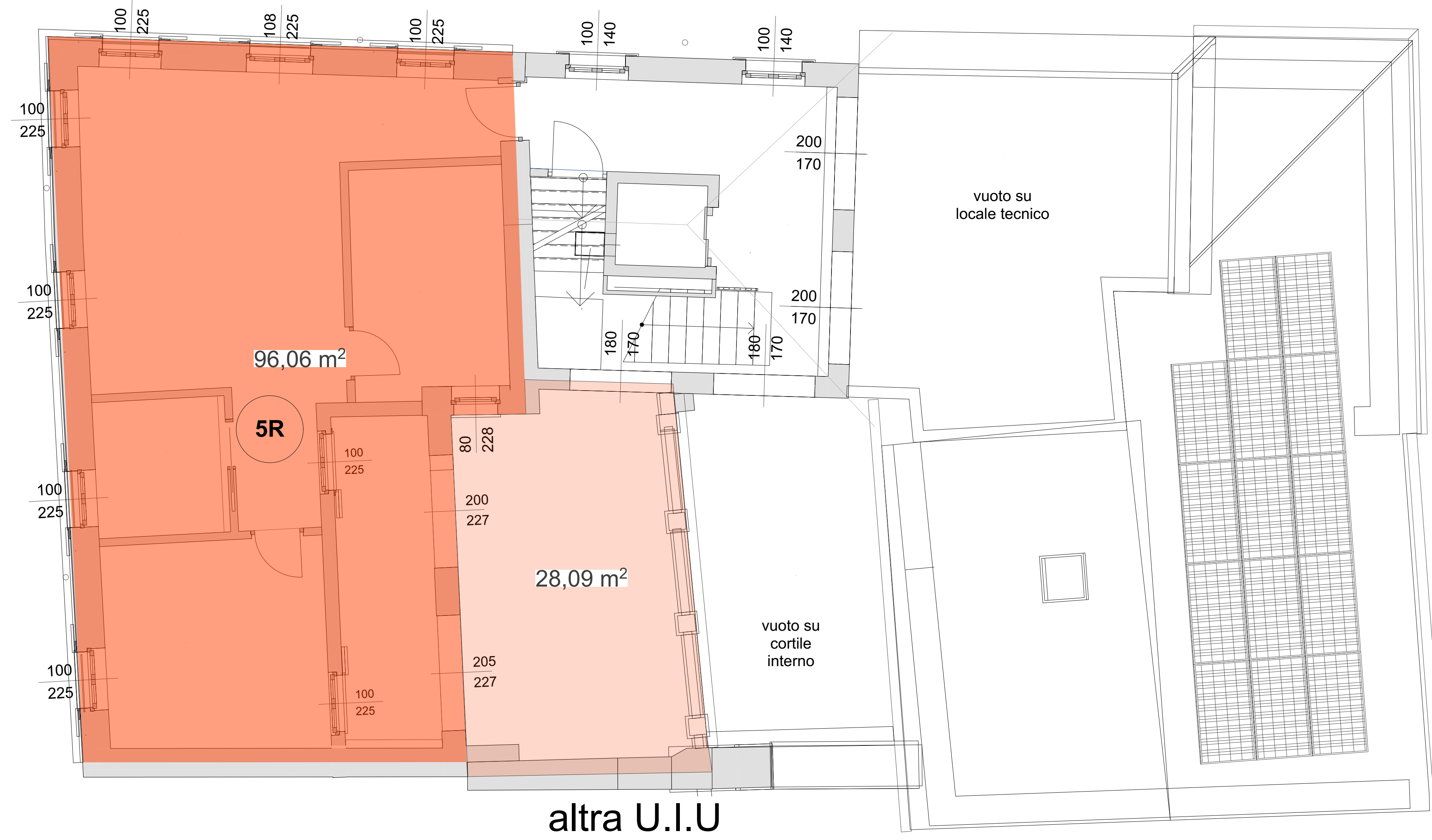


 4R - sup. commerciale 126,98 m²

VIA OTTOLENGHI

PIAZZA ROMA

VIA ALIBERTI



altra U.I.U

 5R - sup. commerciale 103,87 m²