

Condominio "L'Anciuè"

piazza Roma 1,2
14100 Asti (AT)

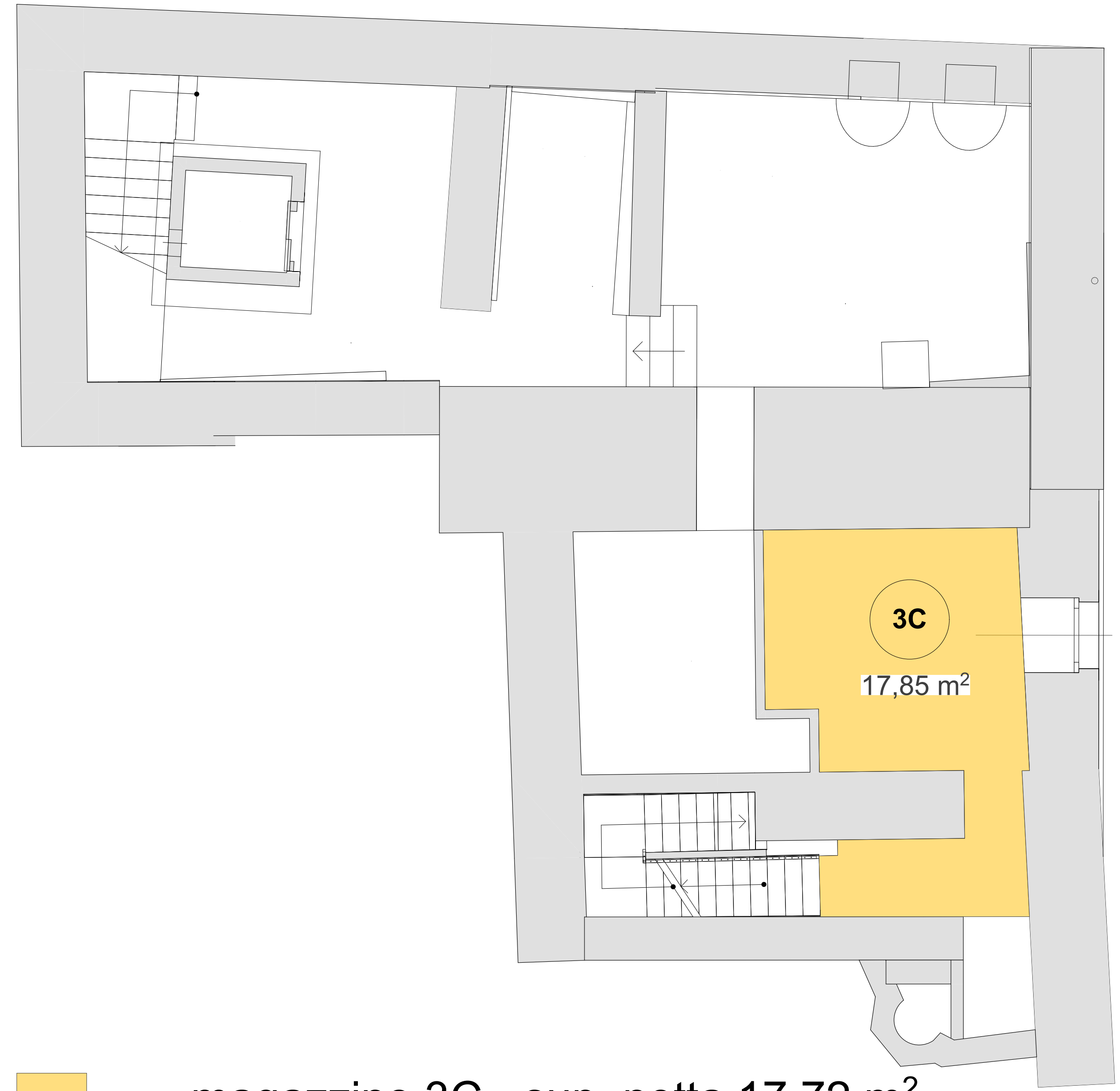
SUPERFICI NETTE

Piano -1	1C	88,12 m ²
	2C	46,96 m ²
	3C	57,60 m ²
Piano Terra	4C	98,70 m ²
	1R	89,38 m ²
Piano Primo	2R	97,93 m ²
	3R	100,70 m ²
Piano Secondo	4R	101,01 m ²
Piano Terzo	5R	65,89 m ²

TOTALE sup. nette
745,57 m²



VIA OTTOLENGHI

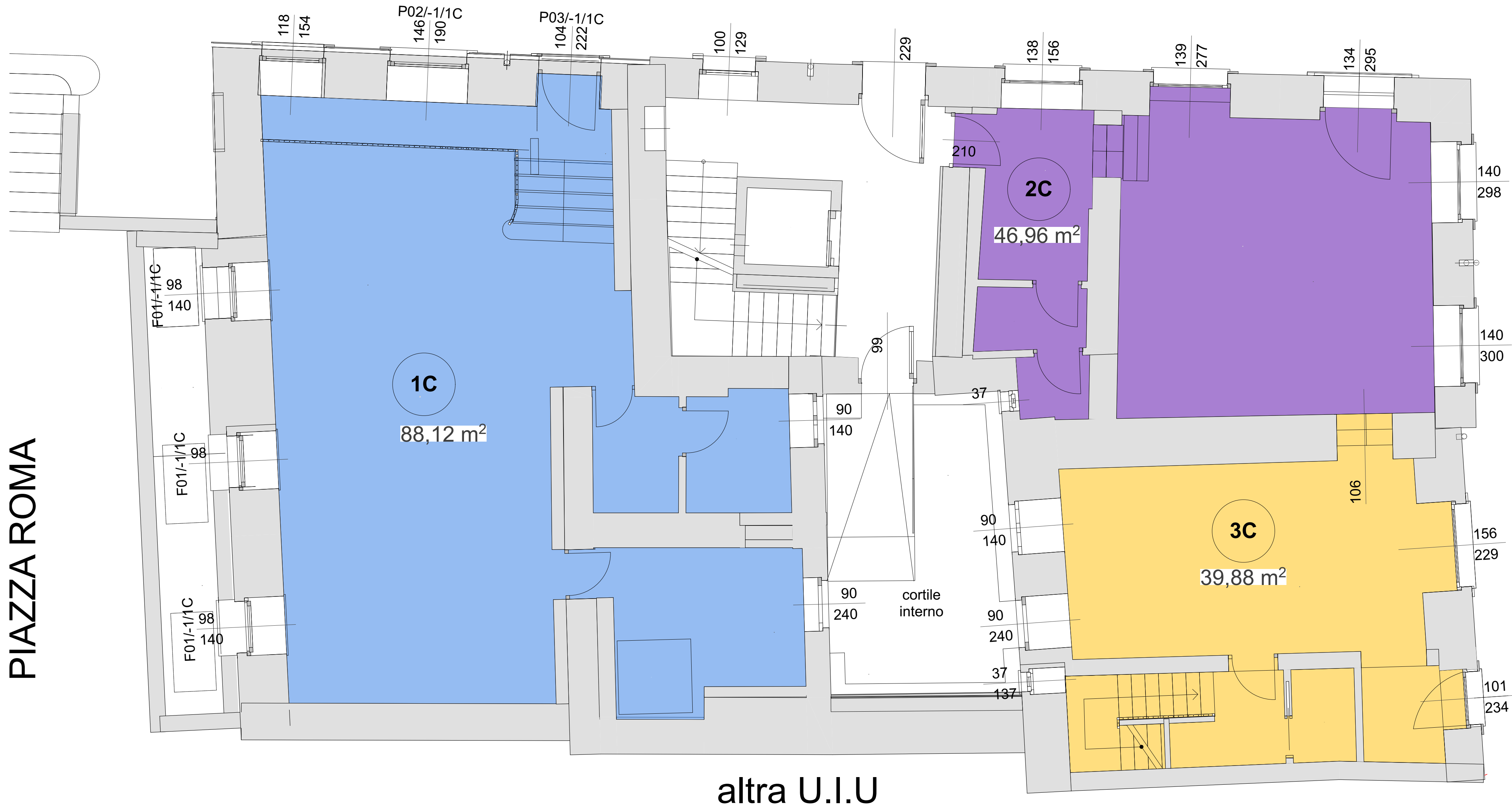


VIA ALIBERTI



magazzino 3C - sup. netta 17,72 m²

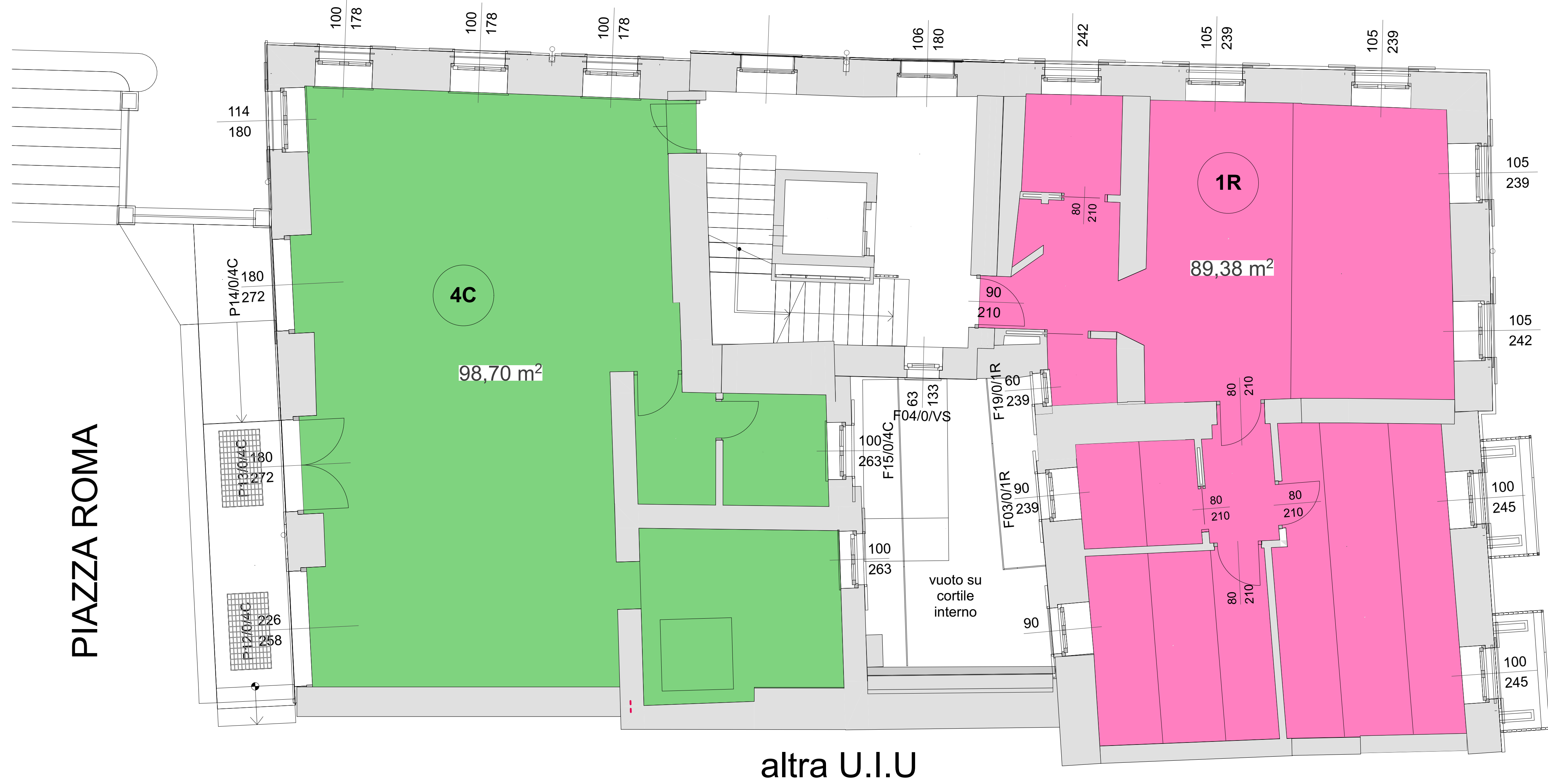
VIA OTTOLENGHI



- 1C - sup. netta 88,12 m²
- 2C - sup. netta 46,96 m²
- 3C - sup. netta 39,88 m²

Codice CAM_2021/1058_PM_02_00

VIA OTTOLENGHI



PIAZZA ROMA

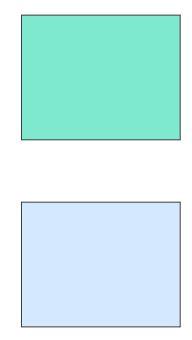
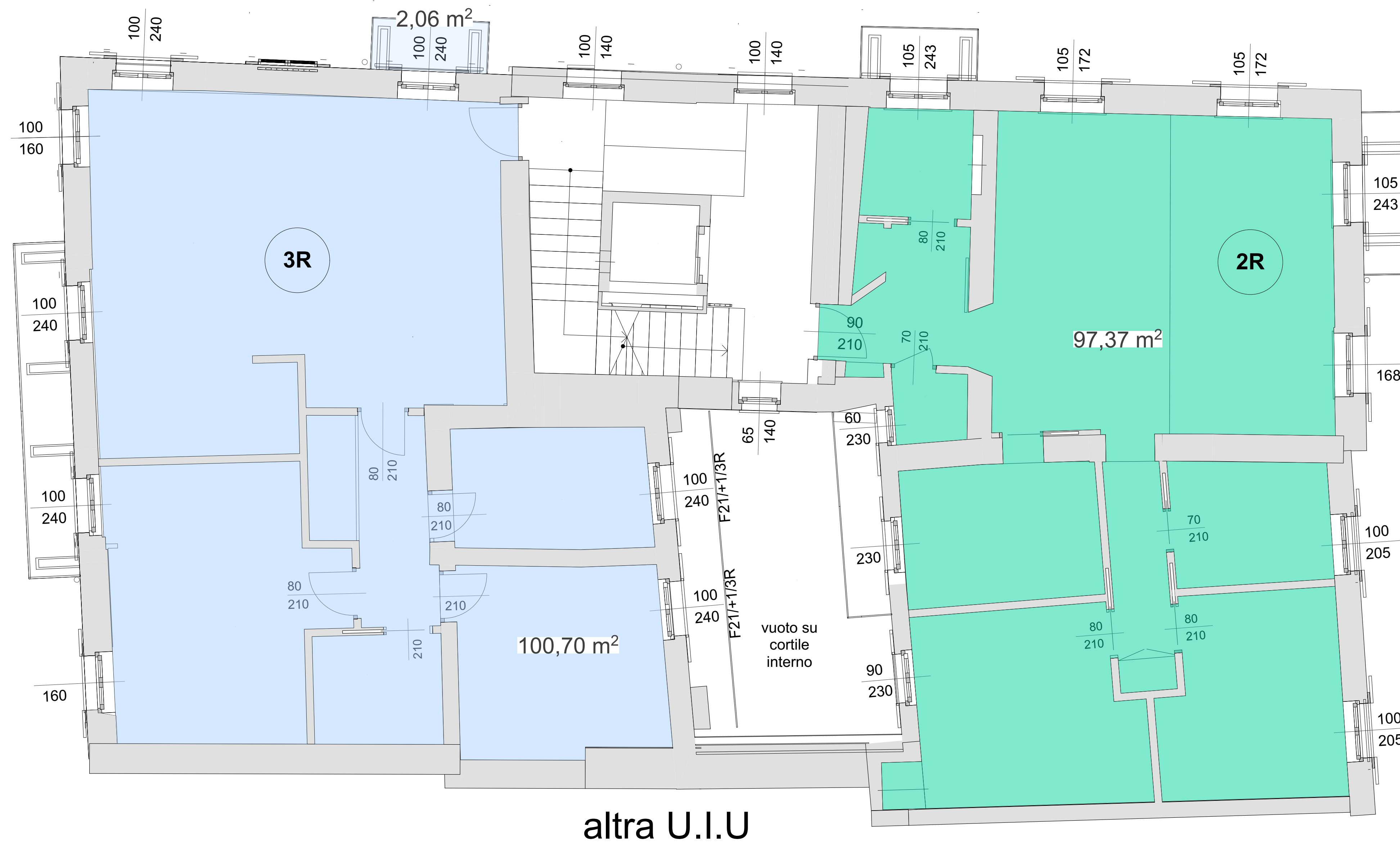
VIA ALIBERTI

altra U.I.U

- 4C - sup. netta 98,70 m²
- 1R - sup. netta 89,38 m²

PIAZZA ROMA

VIA ALIBERTI



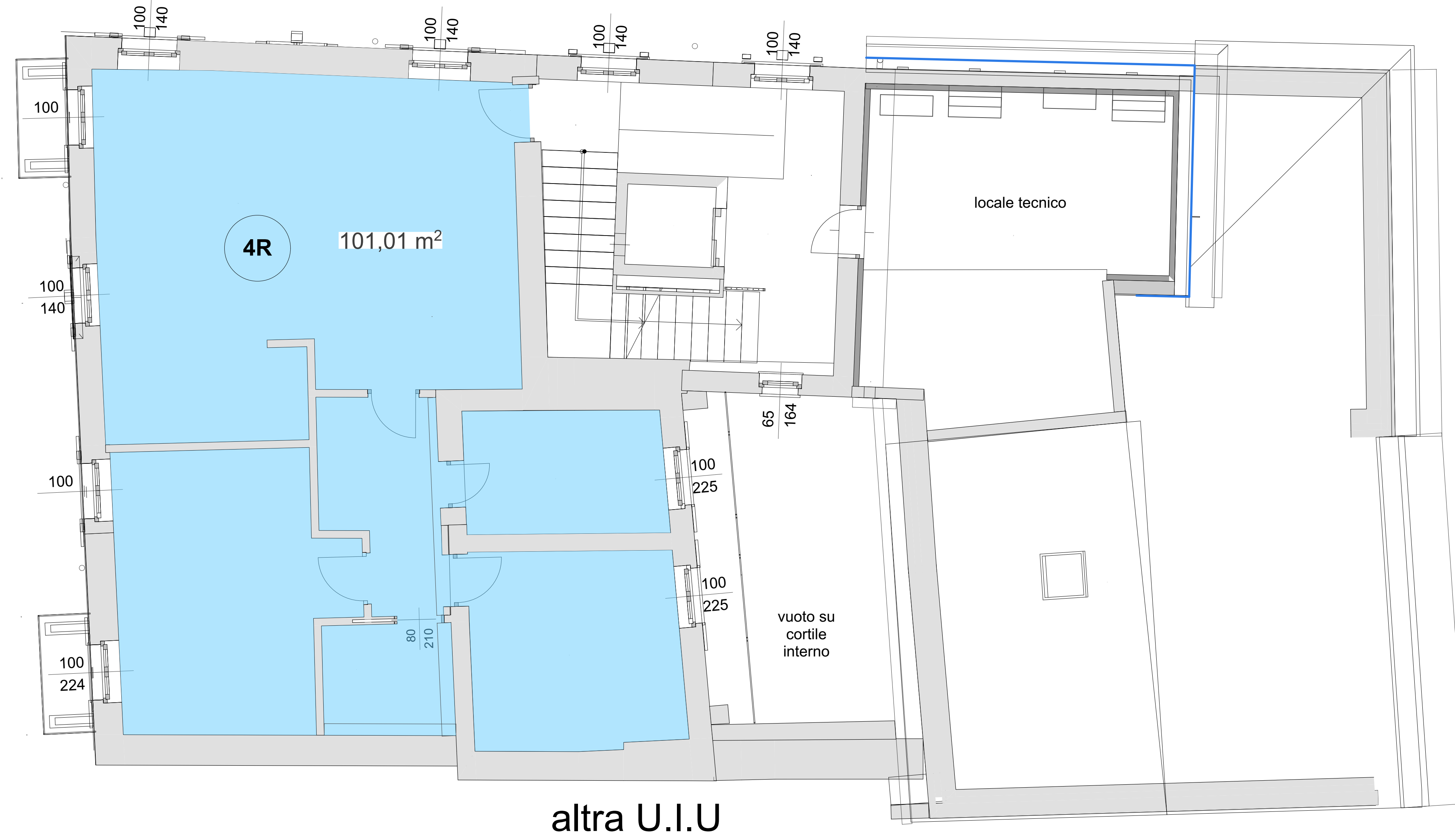
2R - sup . netta 97,37 m²

3R - sup. netta 100,70 m²

VIA OTTOLENGHI

PIAZZA ROMA

VIA ALIBERTI

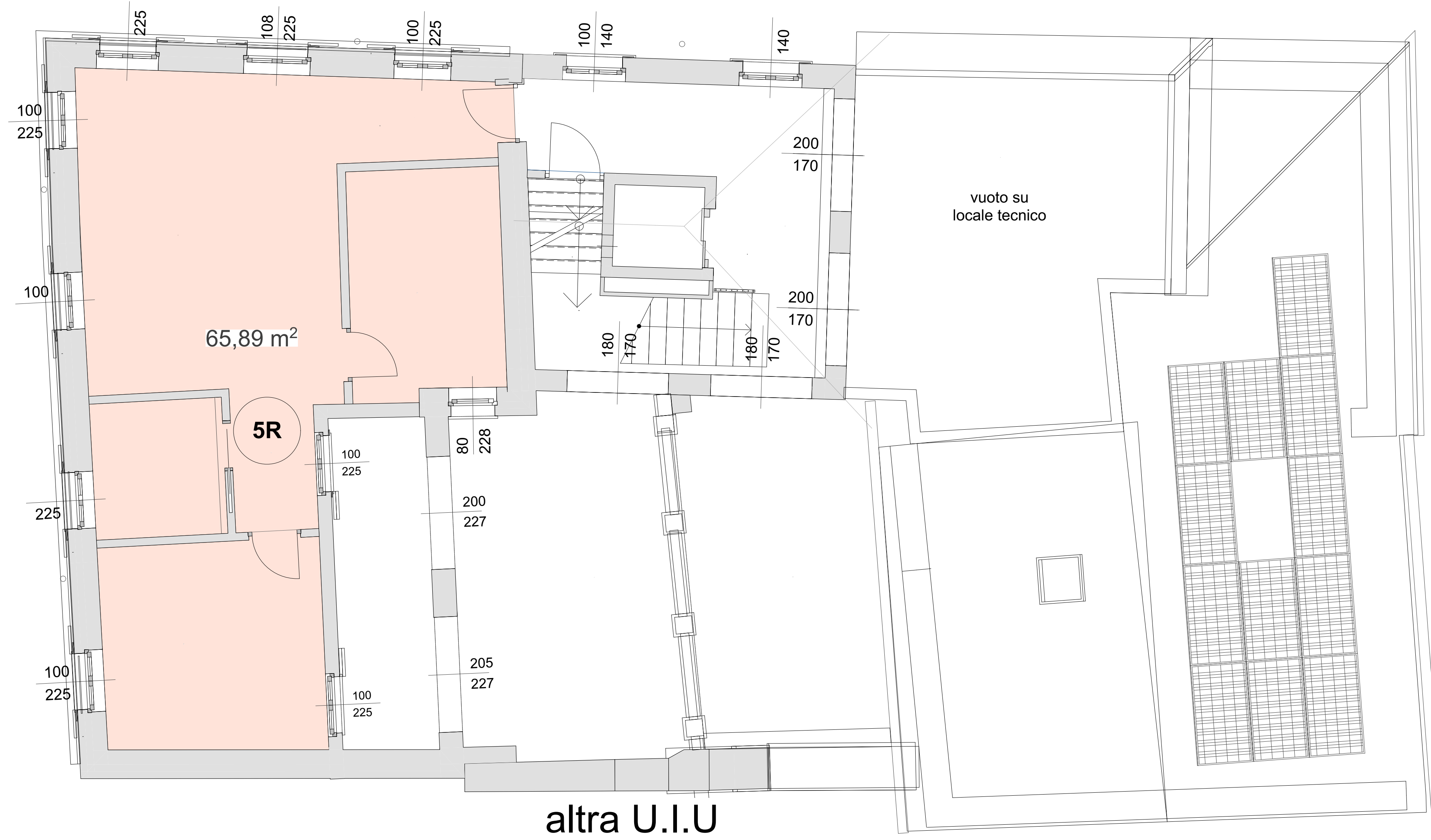


4R - sup. netta 101,01 m²

VIA OTTOLENGHI

PIAZZA ROMA

VIA ALIBERTI



5R - sup. netta 65,89 m²